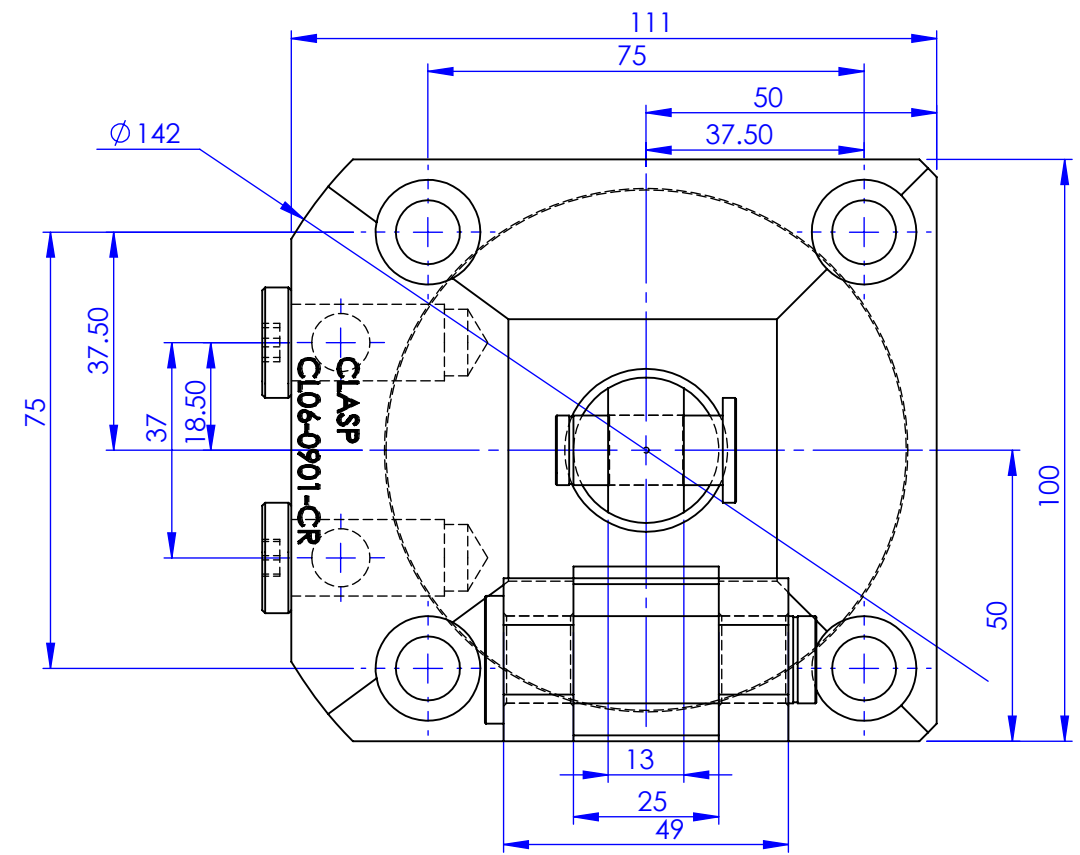
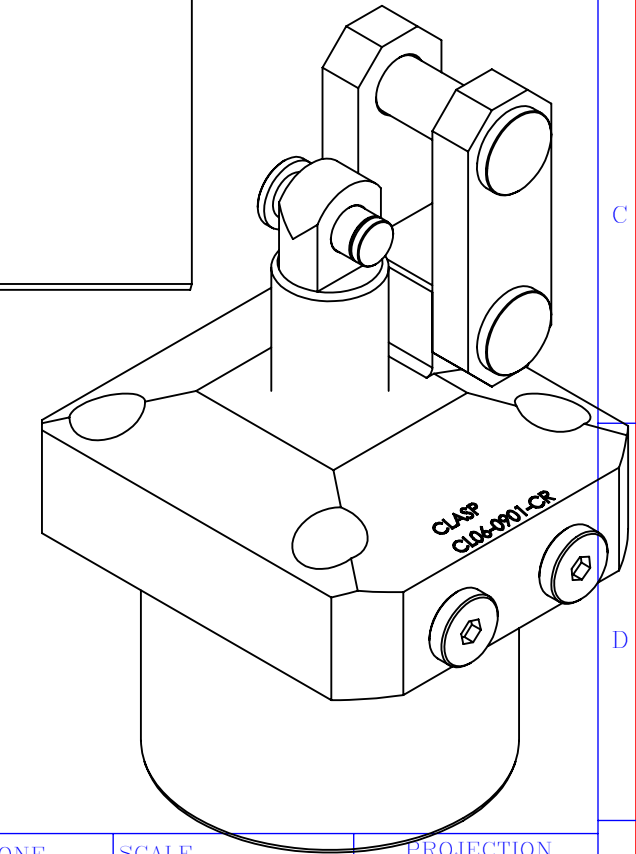
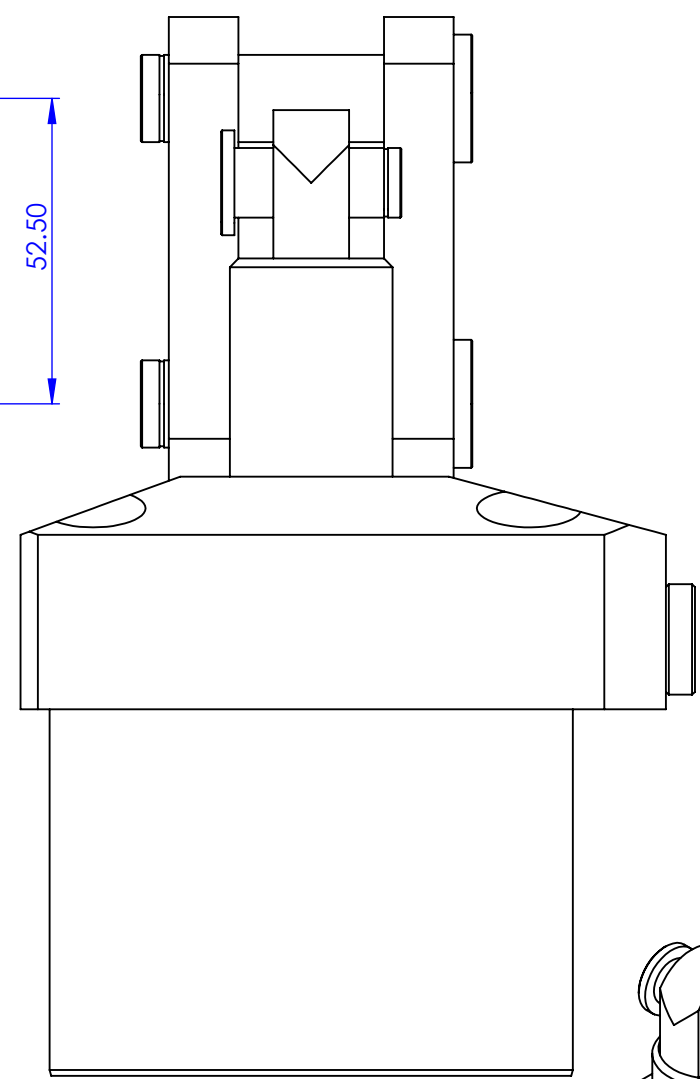
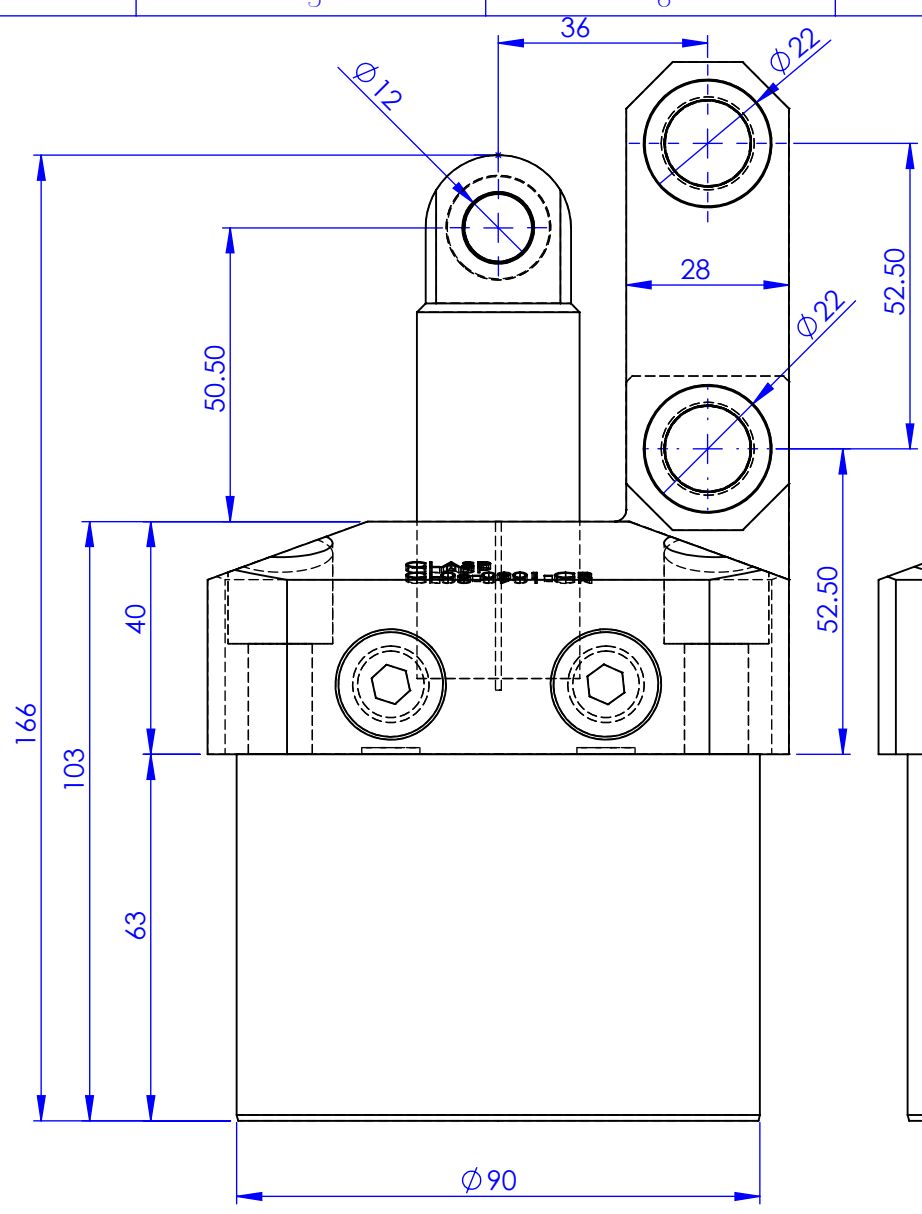
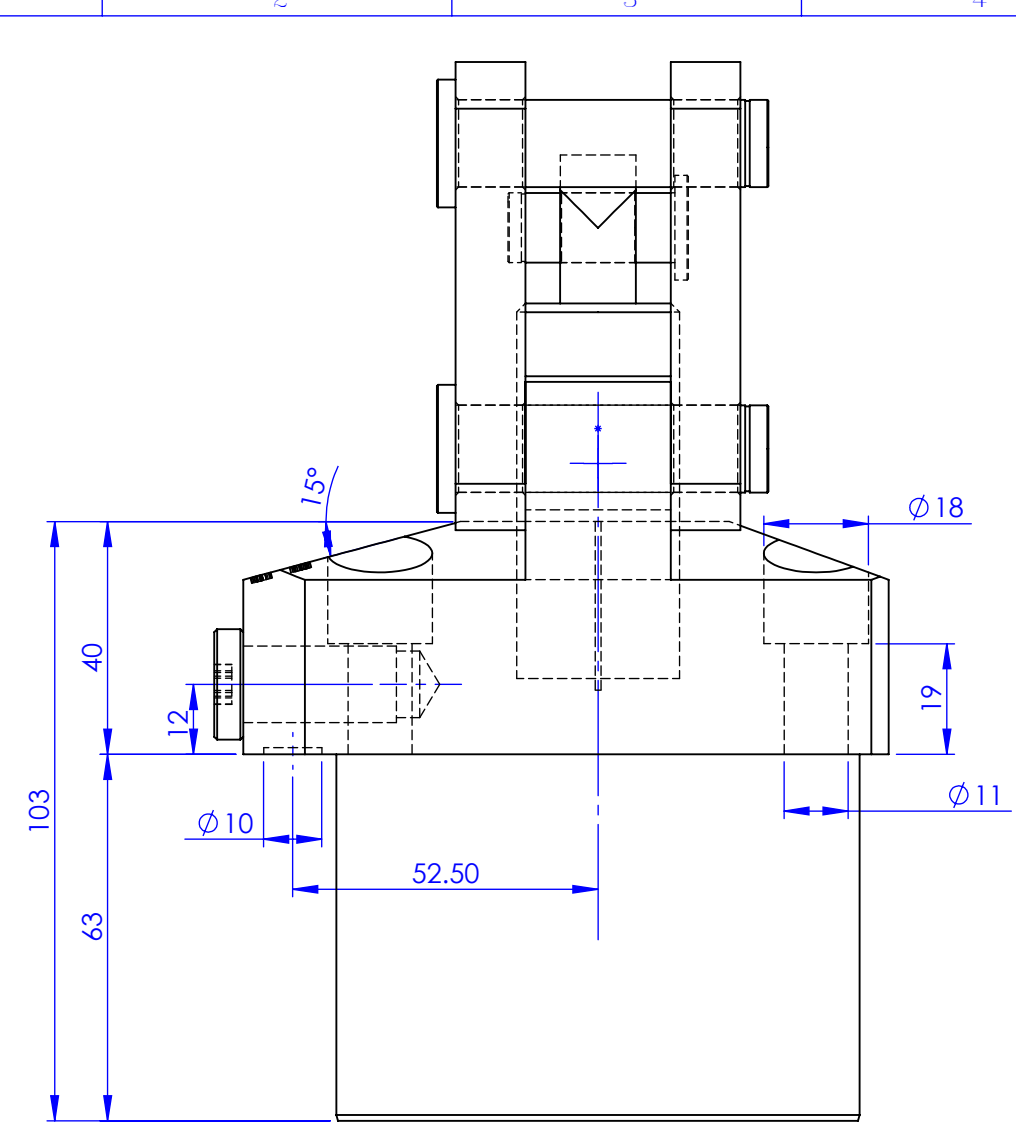


DEBURR



CL06-0901-CR
Bore dia - 65mm
Piston dia - 28mm
Full stroke -41mm
Locking stroke -38mm
Lock cyl.area - 33.2cmsq

Surface Finish	▽▽▽	▽▽	▽	▽	~	ZONE	SCALE	PROJECTION
Ra Value μm	0.025	0.05	0.1	0.2	0.4		1:1	
Ra Symbol	N1	N3	N2	N4	N5			
Drawn	Prabhakar	DESCRIPTION					Qty.	Casting/forging/ welding drg.no
Checked	Prabhakar	DESCRIPTION						
Approved	19/09/21	CL06-0901-CR						
Date	19/09/21						Drawing NO	
Clamping elements type							SHEET: 1 of 1	Sheet No: 1/1
		CLASP BANGALORE-72						

General Tolerance where not specified									
Liner - length or Diameter					Angular-length of shoter side of the angle				
0.5-6	6-30	30-120	120-315	315-1000	1000-2000	Upto 6	6-30	30-120	120-400
±0.1	±0.2	±0.3	±0.5	±0.8	±1.2	±1°	±30°	±10°	±20°